

## Setting up new VPN for the College of Medicine

# Virtual Private Network (VPN)

These instructions are intended for students, employees, and affiliates of the Larner College of Medicine at UVM. If you require assistance while completing these tasks, please contact COMTS Support.

**COMTS Support (802) 488-5553**

**OR submit a trouble ticket at <https://footprints.uvm.edu>**

### Step 1: Download and Install the Cisco AnyConnect Client

If you are a current affiliate, you may already have the application. We recommend you follow the instructions to install the latest version. The updated version is 4.8.03052

#### **Microsoft Windows:**

<https://med.uvm.edu/docs/lcom-cisco-anyconnect/tech-services-documents/lcom-cisco-anyconnect.exe>

This installation may be caught by Windows Smart Screen and User Account Control prompt. If you need an administrator password, please call the support line at (802) 488-5553.

The setup process will install three new applications:

Cisco AnyConnect Secure Mobility Client  
Cisco AnyConnect ISE Posture Module  
Cisco Diagnostic and Reporting Tool

#### **Apple macOS:**

[https://med.uvm.edu/docs/anyconnect-macos-4\\_8\\_03052-predeploy-k9/tech-services-documents/anyconnect-macos-4\\_8\\_03052-predeploy-k9.dmg](https://med.uvm.edu/docs/anyconnect-macos-4_8_03052-predeploy-k9/tech-services-documents/anyconnect-macos-4_8_03052-predeploy-k9.dmg)

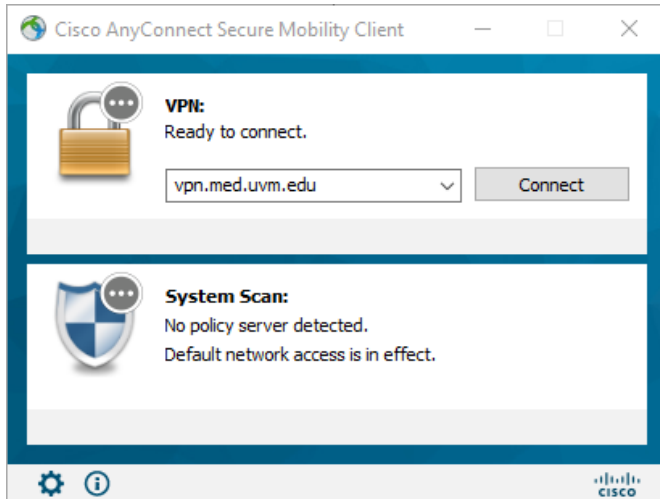
You will only need to install three components

- VPN (Might be greyed out)
- Diagnostic and Reporting Tools
- ISE Posture

# Setting up new VPN for the College of Medicine

## Step 2: Connecting to the VPN

After successful installation you can now launch the Cisco AnyConnect Secure Mobility Client. The version that is needed at the College will look like the image below.



To gain access to most resources at the College of Medicine, please use **vpn.med.uvm.edu**

There are various VPN connections that may require additional multi-factor authentication. If you need to access these systems, please follow the necessary documentation to install and configure Microsoft Authenticator.