



May 2024

Observances

05/1-05/31 | **Asian American & Pacific Islander Heritage Month** ([learn more](#)), **Mental Health Awareness Month**, **Jewish American Heritage Month** ([learn more](#)), **Older Americans Month** ([learn more](#))

05/1 | **Beltane** ([learn more](#))

05/3 | **Holy Friday/Good Friday** (Eastern Orthodox Christian)

05/5 | **Pascha/Easter** (Eastern Orthodox Christian)

05/5 | **Cinco de Mayo** ([learn more](#))

05/5-6 | **Yom HaSho'ah** – Begins at Sundown (Jewish Holocaust Remembrance Day)

05/6-12 | **National Nurses Week** ([learn more](#))

05/6-12 | **Deaf Awareness Week**

05/19 | **Accessibility Awareness Day** ([learn more](#))

05/22 | **Buddha Day/Visakha Puja** ([learn more](#))

05/28 | **World Hunger Day**

05/29 | **Ascension of the Bahá'u'lláh** ([learn more](#))

05/29 | **Memorial Day** (University Closed)

Spotlight: Mental Health Awareness Month



MAY is...
MENTAL HEALTH MONTH

"Mental Health Awareness Month has been observed every year during the month of May in the U.S. since 1949. The month serves to raise awareness about mental health. To fight stigma, provide support, educate and advocate for policies that support the millions of people in the U.S. affected by mental illness."

This year's theme: "Take the Moment"
- NAMI

Learn More: <https://nami.org/Get-Involved/Awareness-Events/Mental-Health-Awareness-Month>

Since its inception in 1949, Mental Health Awareness Month has been a cornerstone of addressing the challenges faced by millions of Americans living with mental health conditions.

A mental illness is a condition that affects a person's thinking, feeling, behavior or mood. These conditions deeply impact day-to-day living and may also affect the ability to relate to others. If you have — or think you might have — a mental illness, the first thing you must know is that **you are not alone**. Mental health conditions are far more common than you think, mainly because people don't like to, or are scared to, talk about them. However:

- [1 in 5](#) U.S. adults experience mental illness each year
- [1 in 20](#) U.S. adults experience serious mental illness each year
- [1 in 6](#) U.S. youth aged 6-17 experience a mental health disorder each year
- [50%](#) of all lifetime mental illness begins by age 14, and 75% by age 24 (Statistics courtesy of NAMI)

Looking for resources and support about mental health & wellness? Check out the [Wellness Committee's Resource Guide](#).

Events

05/6-05/10 | **Professionalism Week** ([See full list of events here](#))

05/08 | **College of Nursing & Health Sciences Zeigler Research Forum** – 8:00 am-12:30 pm, Davis Center ([See full schedule here](#))

05/09 | **In Our Voices/GSA Presents: Living with HIV** – 12:00pm, MedEd 100 or [join via Zoom](#)

05/13 | **Khan Family Fund Refugee and Immigrant Health Lectureship** – *Opportunities to Advance Health Equity Amidst a Shifting Migration Landscape in Vermont*– Naomi Wolcott-MacCausland– 8:00 am-9:00 am, [Zoom](#) (password: pedsgr)

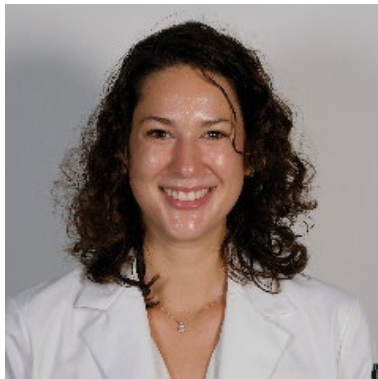
05/14 | **OB/GYN Grand Rounds** – *Workplace Violence: It's Not Part of the Job*– Joseph R. Wax, MD– 7:30 am-8:30 am, [Zoom](#)

05/19 | **Commencement** – 3:00 pm, Ira Allen Chapel ([See more information here](#))

ODEI Announcements

New Affinity Student Interest Group Established

A new affinity student interest group has been established at the Larner College of Medicine.



The **Maimonides Society** aims to create a space where individuals of Jewish heritage, as well as those interested in Jewish culture and traditions, can come together to celebrate their shared identity, promote cultural awareness, and engage in meaningful dialogue. This initiative is driven by the belief that embracing diversity enriches the educational experience and contributes to the holistic development of individuals within the LCOM community. The key objectives of the group include cultural celebrations and awareness, professional development and networking, community service and outreach, mental

health and well-being and interfaith dialogue.

The Maimonides Society is led by **Sarah Kohl, '26**.

Beneath Our Skin Exhibit Highlights Experiences of Black Vermonters

Want to keep up to date on Gender Equity events and initiatives? Join the [Gender Equity Listserv](#).



Become a Faculty Mentor to a Medical Student

The LCOM Mentors program pairs medical students who are members of groups underrepresented in medicine with faculty members and/or residents who have common interests and goals. This relationship can support the medical student (the mentee) to become familiar with institutional expectations, networks, and practices that are relevant to productivity and advancement at the Larner College of Medicine (LCOM).

For more information contact [Eileen CichoskiKelly](#) or to sign up, please [fill out this short form](#).

Register for the Brave Enough Conference, September 27-30

The BE 2024 Women's CME Conference will be focused on connection. The theme is Never Walk Alone; the conference will specifically address how to combat isolation of women working in healthcare with strategies to foster deeper connections and promote accountability. The conference will cover specific topics to create allyship and peer mentorship by focusing on topics women in medicine face in order to leave the conference with strong allies. We want every woman to leave with a group of friends that can be there for her all year through. Attendees will have more time to connect with phenomenal speakers, ask more questions, and experience live coaching in a protected, safe environment.

[Learn More & Register Here →](#)

From the AAMC

Register for AAMC webinar series on developing diverse and inclusive leaders

Join the AAMC throughout May for a three-part series where expert faculty will discuss the importance of cultivating leaders to foster and support inclusive excellence in academic medicine. Drawing from their diverse perspectives, speakers will present multiple strategies to nurture leaders at various stages of their careers, including mentorship, creating opportunities, conceptual frameworks, navigating pushback, adaptive conflict resolution, and more. The first webinar, "Developing Inclusive Leaders in Polarizing Times," will take place on May 6 at noon ET. This series was developed in partnership with the AAMC Group on Diversity and Inclusion (GDI) and the Group on Women in Medicine and Science (GWIMS) and is part of the [AAMC IDEAS \(Inclusion, Diversity, Equity, Anti-racism\) Learning Series](#) which provides actionable information about diversity, equity, and inclusion strategies that members of the academic medicine community can put into practice.

[Register Now →](#)

Collecting stories from fourth year medical students

The AAMC is collecting 55-word stories from fourth year medical students for an upcoming *AAMCNews* story. Graduating students are asked to submit reflections from any aspect of their medical school journey — the moment when they decided on a specialty, an interaction with a patient or professor, how they've changed, or what they found challenging or exciting. The deadline for submissions is May 3.

[Submit Your Story →](#)

'Beyond the White Coat' podcast explores innovations in the residency application process

In the latest "Ask an Expert" mini episode of the AAMC's "Beyond the White Coat" podcast, Patrick Fritz, AAMC senior director of admissions and selection application services, and Jason Reminick, MD, MBA, CEO and founder of Thalamus, discuss mission alignment between the two organizations, how holistic review and data impact a more diverse workforce, and future improvements to the transition to residency process. The episode is available wherever podcasts are streaming.

[Listen Now →](#)

"Crossing the Chasm" podcast episode examines health justice in communities

Philip Alberti, PhD, founding director of the AAMC Center for Health Justice, joined a recent conversation on "[Crossing the Chasm](#)," a podcast hosted by Greg Johnson, MD, CEO for hospital medicine and chief diversity officer of Sound Physicians. The discussion focused on Alberti's background, work, and the nuances of health justice as he explained how every community deserves the fair and just opportunity to attain the highest level of health for their population.

[Listen Now →](#)

AAMC publishes maternal health advocacy priorities

The AAMC has published its advocacy agenda to address the maternal health crisis and advance birthing equity with recommendations to prevent maternal deaths, address inequities, and promote the health of pregnant patients. Key recommendations include diversifying, expanding, and extending the perinatal workforce through increased investment in Medicare-supported graduate medical education and workforce development programs; bolstering the maternity care system by addressing the historic financial challenges facing the hospital field; ensuring access to coverage and care by providing 12 months of continuous post-partum Medicaid coverage and limiting prior authorization during the perinatal period; promoting whole-person health by investing in innovative and holistic care delivery models, including integrated behavioral health; and fostering cross-sector partnerships to address the upstream social determinants of health.

[Read More →](#)

New *MedEdPORTAL* collection on climate and health education

A new *MedEdPORTAL* Climate and Health Education Collection equips educators and institutions with curricular innovations to address the impact of climate on health. This peer-reviewed collection emphasizes equitable care for all patients and communities by providing

health professions educators with the tools they need to train the next generation of health providers to identify, treat, and prevent climate-related health issues.

[Read More →](#)

AAMC webinar on helping students navigate critical junctures of medical education

The AAMC will host a webinar on May 22 from 2-3 p.m. ET, “Navigating Critical Junctures: Professional Opportunities and Experiences.” The webinar will focus on exploring challenges and innovations associated with career exploration for students. This interactive webinar aims to foster collaboration between student affairs and educational affairs, inspire innovation, and strengthen the support systems for our incoming medical students. The session is a part of a year-long series on Holistic Student Support and is open to all. General questions about this webinar can be sent to holisticreview@aamc.org.

[Register Now →](#)

HRSA increases loan repayment for primary care providers in high-need areas

The U.S. Department of Health and Human Services, through the Health Resources and Services Administration (HRSA), announced that it has increased by 50% the initial loan repayment amount available to primary care providers — MDs and DOs, including OB-GYNs and pediatricians; nurse practitioners; certified nurse midwives; and physician assistants — who commit to practicing in areas with significant shortages of primary care providers. With the growing cost of medical school and increased challenges in recruiting primary care providers to high-need areas, this action will help rural and historically underserved communities attract providers to deliver critical primary care services. These providers could have as much as \$75,000 forgiven in exchange for a two-year service commitment.

[Read More→](#)

AAMC Center for Health Justice seeks community collaborators to share their story of environmental injustice

Environmental justice is the shared vision of thriving, healthy communities everywhere, where everyone can breathe fresh air, drink clean water, and care for one another. People across the nation are collectively taking action to protect the air, water, and land in their communities. And those communities are creating positive, lasting changes, using personal stories and lived experiences to understand and respond to environmental injustices. To learn more about these stories and provide a platform for telling them, the AAMC Center for Health Justice is seeking up to five collaborators (nonprofit organizations and/or individuals) who will work with the center to produce their story over the next year. Applicants must be a 501(c)(3) nonprofit organization or an individual who has been working with their community on an environmental justice issue for at least one year and is based in the United States (or U.S. territories). The deadline for applications is May 6.

[Read More→](#)

Special AAMC resource collections on climate change and medical education

Medical educators have begun to adapt curricula to better equip current and future clinicians to effectively navigate the health effects of climate change in the populations they serve. To support the community with integrating climate change into the curriculum, the AAMC offers several special collections focusing on climate change in medical education. This includes a collection of scholarly articles published in *Academic Medicine* with the latest peer-reviewed literature on this topic. The AAMC virtual communities also features a curated resource bundle that offers a range of articles, podcasts, and scholarship on this critical issue.

[Learn More: Academic Medicine Collection →](#)

[Learn More: AAMC Virtual Resource Collection →](#)

Articles of Interest

Dozens of Campuses Shed or Alter DEI Efforts as Political Pressure Mounts

By Maggie Hicks

“Since January 2023, at least 116 college campuses have altered or eliminated offices, jobs, hiring practices, and programs that explicitly recruit and retain students and staff from marginalized communities in response to state legislation and political pressure, according to a Chronicle analysis... DEI offices have taken the greatest hit, with dozens of colleges renaming or closing departments. Colleges have cut funding for other DEI programs, and reassigned DEI employees to other parts of the institution.”

[Read More →](#) (Requires UVM Login)

False Narratives Create More Challenges for American Indians Struggling with Substance Abuse

By Madelyn Beck

“There’s a false narrative that Native Americans are more genetically predisposed to becoming addicted to alcohol than European Americans. New research suggests that simply believing it can be harmful.”

[Read More →](#)

The Mystery of Tay-Sachs as a Jewish Disease

By David A. Greenberg

“Jewish genetic diseases like Tay-Sachs disease (TSD) are called “Jewish” because they are found more frequently in the Ashkenazi Jewish population than in other populations. But the big question that is always asked about Jewish genetic disease is: why the Jews?”

[Read More →](#)

Invisible in the Data: Broad ‘Asian American’ Category Obscures Healthcare Disparities

By Usha Lee McFarling

“They have roots in 50 countries that cover more than half of the globe’s surface. They make up more than 60% of the world’s population. They speak more than 100 different languages. Yet in medical research and public health in the United States, people with Asian ancestry are almost always grouped into a single racial category.”

[Read More →](#)